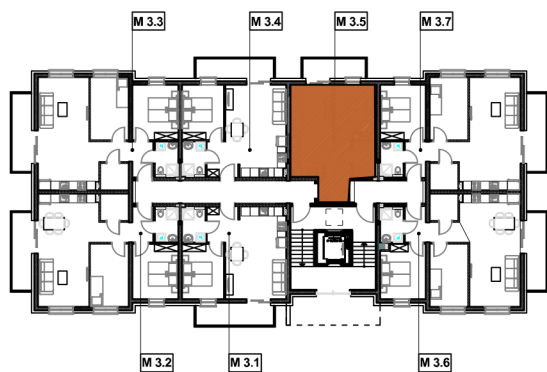
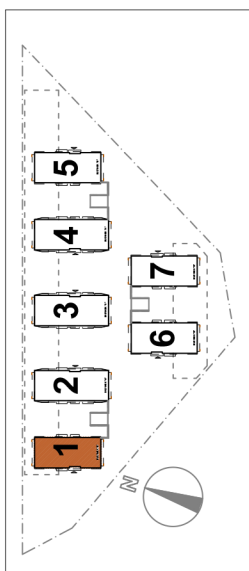


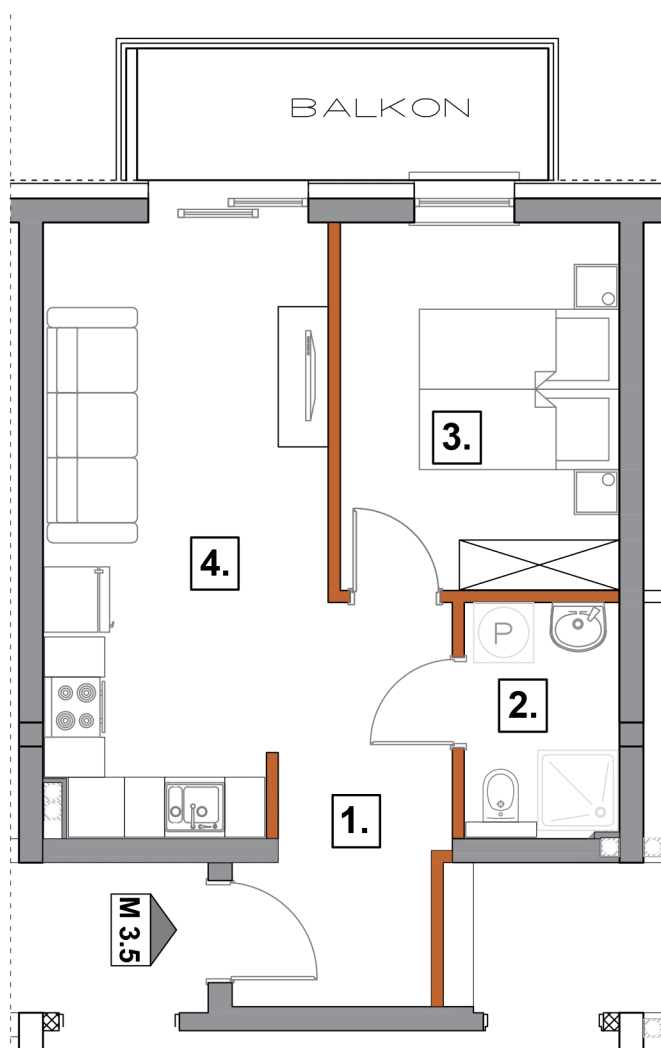
# BUDYNEK "1"

# PIĘTRO III

# 36,69m<sup>2</sup> M 3.5



## OSIEDLE PRZY WITOSA



36,69 m <sup>2</sup>	M-3.5
Pow. użytkowa	nr
Przedpokój	1 6,94 m <sup>2</sup>
Łazienka	2 3,52 m <sup>2</sup>
Pokój	3 10,07 m <sup>2</sup>
Salon + aneks kuch.	4 16,16 m <sup>2</sup>